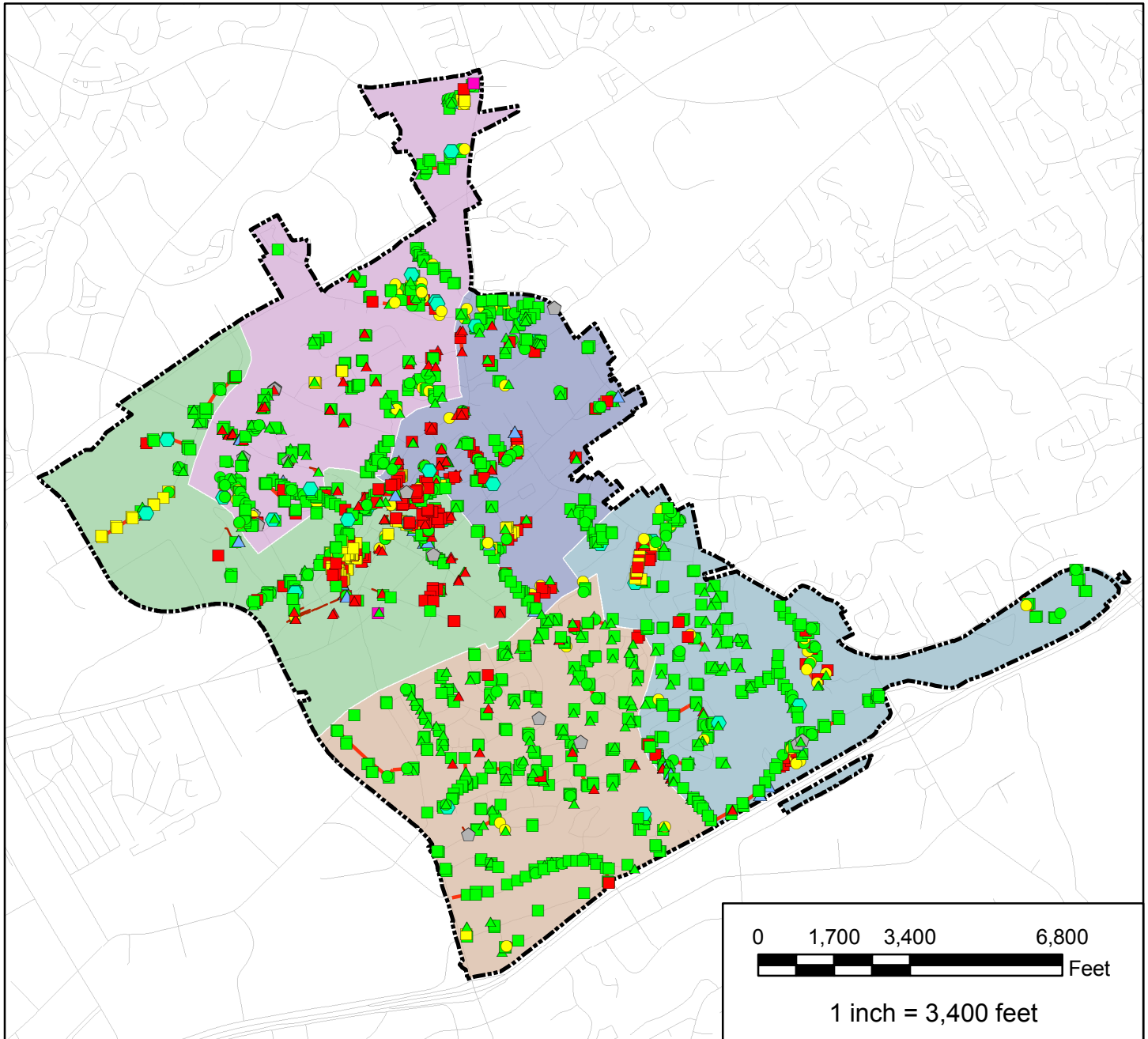


City of Norcross Overall MS4 Inventory



Storm Structures

- Catch Basin: 803
- ▲ End of Pipe: 117
- ▲ Flared End Section: 26
- ◊ Flume: 15
- Grated Inlet: 196
- ▲ Headwall: 282

- Hooded Grate Inlet: 93
- Junction Box: 214
- Median Drop Inlet: 4
- ◆ Outlet Structure: 32
- Pedestal Inlet: 80
- ▲ Safety End Section: 1

- Storm Pipes: 23.76 mi
- Ditches: 1.07 mi
- Roads
- ▭ City Limits

Sectors

- 2014-2015
- 2015-2016
- 2016-2017
- 2017-2018
- 2018-2019

